

Pepper – Our social robot

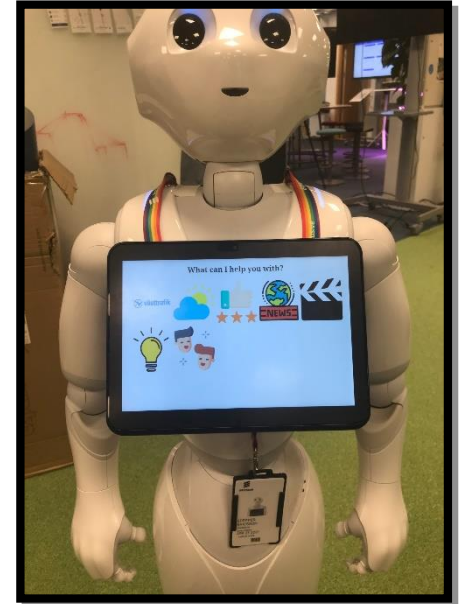
Background:

Pepper is a semi-humanoid robot manufactured by SoftBank Robotics.

Pepper is equipped with a set of sensors, speakers and cameras enabling Pepper to interact with its environment.

The robot can listen and interpret what you say, detect if you're happy or sad, walk and move its arms among other things.

By creating applications, you can decide how Pepper should interact with its environment. We want it to be a social robot that interacts with employees & visitors at Ericsson.



Tasks/Solution

- Make a new use case for Pepper
- Demonstrate the use case in our coffee area at Ericsson
- Document user guidance for the selected use case
- Apply AI/ML if possible for the use case
- Explore Peppers SW possibilities

Mentors: anna.v.pettersson@ericsson.com & lars-erik.lindberg@ericsson.com

