

Where the brightest scientific minds thrive.

IMED Early Talent and Post Doc programmes



Scientific innovation is at the heart of everything we do.

Scientific innovation is at the heart of our business and reflects our purpose as a company: to push the boundaries of science to deliver life-changing medicines.

As a global, innovation-driven biopharmaceutical business, we are committed to translating our ground-breaking science into the next generation of medicines that patients need.

Across AstraZeneca we are building a culture with values that promote scientific curiosity, that is agile and high-performing, and which attracts, develops and retains great people.

In our research laboratories, and those of our partners, our focus is on scientific quality, smart risk taking and good decision making. This approach has helped us to build our understanding of disease biology and is why our pipeline includes some of the most exciting and innovative molecules in development.

With operations in more than 100 countries and with more than 50,000 people worldwide, we are one of only a handful of global biopharmaceutical companies that spans discovery, development, manufacturing, distribution and commercialisation. This means we are well placed to turn innovative molecules into life-changing medicines.



Mene Pangalos, EVP, IMED Biotech Unit

“Now is a great time to be a scientist in AstraZeneca. Working across a range of therapy areas our IMED teams are focused on translating the really cool science that is happening in our labs into the next generation of medicines that patients need. To make this happen we need great people who share our passion for science and who have the drive and determination to meet the unmet needs of patients around the world.”



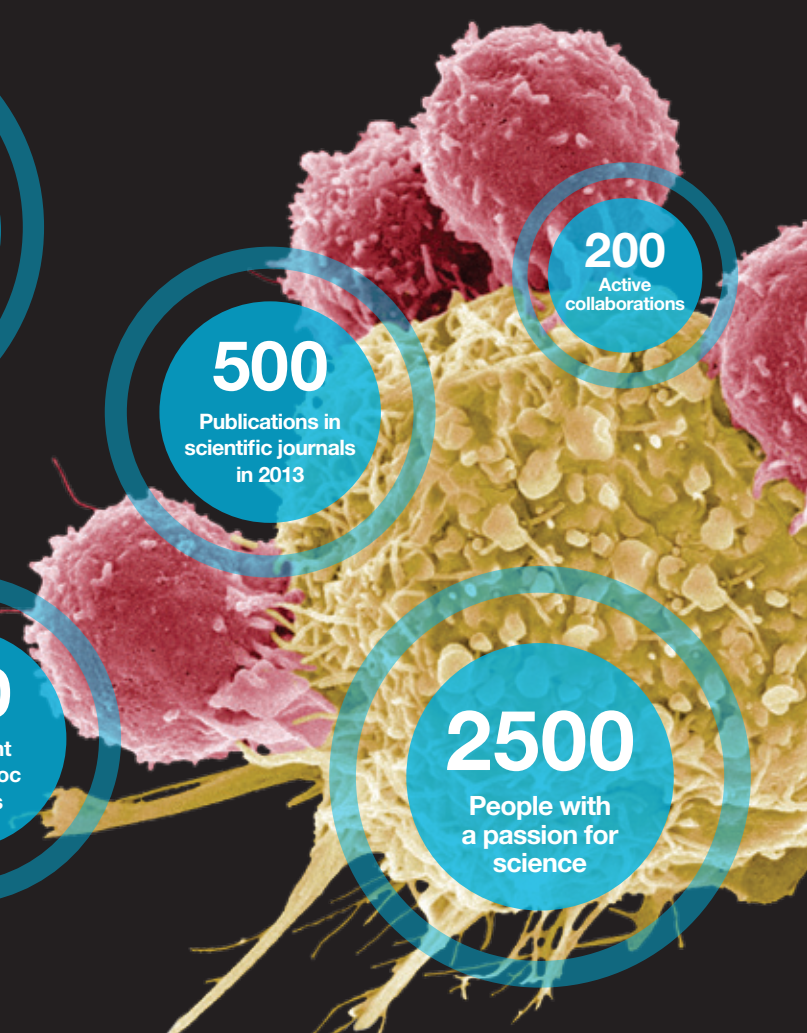
Where science thrives: The Innovative Medicines and Early Development (IMED) Biotech Unit.

AstraZeneca's Innovative Medicines and Early Development (IMED) Biotech Unit is focused on driving the scientific advances in small molecules, RNA and other emerging technologies, and drug discovery.

Each year we invest in excess of \$1bn on discovering and developing the next generation of life changing medicines, from initial target selection through to the end of Phase 2 trials.

We undertake research on a truly global scale, operating vibrant science centres across three continents. We collaborate with world-renowned scientists and academic institutions and partner with like-minded science-led companies that contribute complementary technologies, know-how and molecules. We are leading the way in pioneering more open innovation, our IMED teams are actively looking at new ways to share ideas and enable scientific innovation to discover the next scientific breakthrough.

By being open for collaboration, creating environments where science can thrive, we will push the boundaries of science and deliver the life changing medicines that patients need.



This isn't simply a career choice

It's about being
the best you
can be

The IMED Undergraduate Industrial Placement Student Programme

The Undergraduate Industrial Placement Student (UIPS/ Sandwich) Programme immerses individuals in the world of ground-breaking drug discovery, embedding undergraduates within highly dedicated teams driven to creating impactful new medicines.

At AstraZeneca we believe in the potential of innovative science to transform the lives of patients around the world. This is only possible by identifying and developing the next generation of research scientists. The UIPS programme is integral to achieving this aim and provides the first step in our investment to nurturing the science leaders of the future.

What you need to know

- The programme lasts for 12 months and students are aligned to drug discovery projects within the business.
- Placements are based in Sweden (Mölndal) and the UK, Alderley Park & Cambridge. Our UK site will be moving to Cambridge in 2016 placing us adjacent to the best medical science in the UK.

Programme requirements

We are looking for high performing science undergraduates with a passion to broaden their knowledge and life experience in an innovative science-dedicated research environment.

We particularly want people who are driven and motivated to create impactful new medicines. People who want to push themselves to be the best they can be.

- You will have an experienced mentor to ensure that you maximise the potential that the placement offers.
- You will become an expert in a wide range of modern methodologies and scientific techniques including access to cutting edge technologies.
- You will be expected to regularly discuss and present your science within your project's teams.
- You will develop your technical skills as well as the softer skills required for success e.g. communication, data analysis, time management and presentation techniques.

This isn't simply a career choice

It's about discovering your vocation

The IMED Graduate Programme

Our Graduate Programme is designed for those with a passion for science, and a desire to make a genuine difference to the lives of patients today and in the future.

At AstraZeneca, we are constantly looking forward and thinking about how science can meet unmet patient needs. During the course of the programme, you will have the opportunity to make a real contribution to our projects and could find yourself involved in scientific breakthroughs that will help deliver the next generation of life saving medicines.

What you need to know

- This is a two year programme where graduates complete 3 placements across Innovative Medicines and Early Development with a focus on breadth of experience.
- Our graduates are based in one of our 3 strategic sites: the US (Waltham, Massachusetts), Sweden (Mölnådal) and the UK (Alderley Park and Cambridge).

Programme requirements

We are looking for graduates who have a top class degree in a broad chemical or biological discipline and have completed their first degree or Masters in 2014 or are due to graduate in 2015.

We particularly want people with a passion for science who really want to make a difference to patients and patients' lives. People who want to push the boundaries of science to develop the next generation of exciting new medicines.

- Our UK site will be moving to Cambridge in 2016, placing us adjacent to the best medical science in the UK.
- Our graduates have a mentor for the duration of the programme to offer career counselling and guidance as well as 3 placement line managers.
- You will be provided with the necessary support to develop your scientific technical skills working with world class scientists with state of the art facilities.
- All graduates are also enrolled onto the Global Graduate Development Programme where we focus on the softer skills that are required to make the successful transition into industry.
- You may also have the opportunity to complete an International Rotation at another R&D Site.
- We also offer the competitive salary and benefits that you would expect within a world class Pharma company.

This isn't simply a career choice

It's about making a real difference

The IMED Post-Doc Programme

The Post-Doc Programme brings together motivated & innovative post-doctoral scientists who have a passion for great ideas and a desire to make a difference through an academic-style post-doctoral position in a global pharmaceutical setting.

At AstraZeneca we are passionate about pushing the boundaries of science to create medicines for some of the world's greatest healthcare challenges. As part of our commitment to leading-edge science, AstraZeneca has created a high quality post-doctoral research programme to facilitate scientific discovery. The programme brings greater interaction with academia as well as investment in the next generation of talented scientific minds.

What you need to know

- The programme funds post-doctoral projects originating from internal scientists/clinicians across the research areas and scientific disciplines within AstraZeneca.
- These projects address fundamental scientific challenges that underpin drug discovery and development and are for a period of two years. There is opportunity for a merit based extension.

Programme requirements

We are looking for motivated, enthusiastic individuals with an excellent track record from a diverse range of disciplines across preclinical to early clinical development including: biochemistry, physiology, molecular and cellular biology, pharmacology, computational biology/ chemistry, informatics, medicinal chemistry, biophysics, structural biology, DMPK, safety & toxicology, statistics.

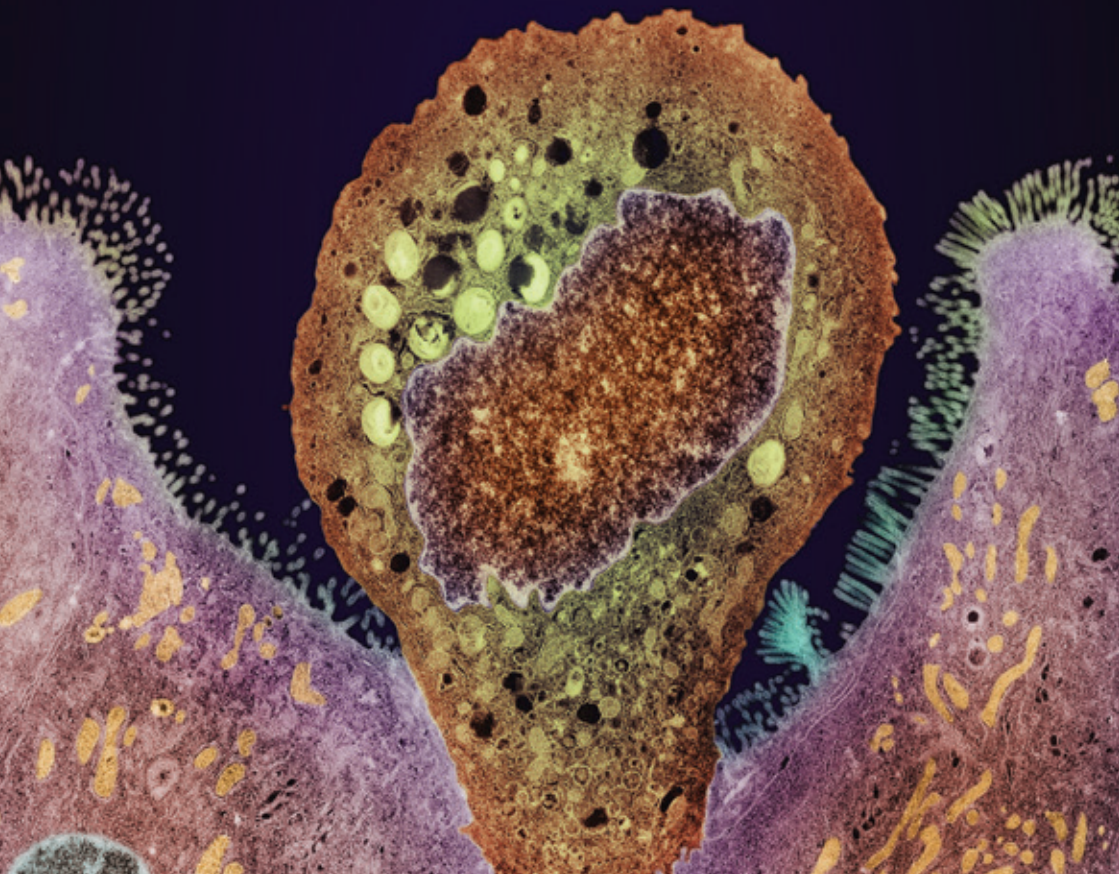
We particularly want people who are passionate about cutting edge science to help us develop the next scientific breakthrough. People with desire to undertake high-quality, innovative research in a thriving scientific environment.

- Positions are mainly based on one of our 3 strategic R&D sites in the US (Waltham, Massachusetts), in Sweden (Mölndal), and in the UK (Alderley Park and Cambridge).
- In addition to the availability of specialized drug discovery courses, each post-doctoral scientist receives a tailored training and development programme. These are aligned with the established AstraZeneca approach to personal development as well as key skills, such as presentation delivery and publication writing.
- You will also be part of an active community of post-doc scientists across the global organization and fully integrated into the wider scientific community.
- We offer the competitive salary and benefits that you would expect within a world class Pharma company and provide help with relocation and visas if required.

What to expect

We focus on innovation. Entrepreneurial thinking plus a challenge everything mindset are encouraged, as is speaking up – having the courage to be candid and to do the right thing, rather than the easy thing. It is this that creates a dynamic culture where anything is possible, driving scientific excellence.

We believe that collaboration and challenge are key to meeting the unmet needs of patients. Join us and you'll find a team with a diverse range of perspectives, talents and ideas. A team that are pushing the boundaries of science and realising their own potential, through effective leadership as well as excellent learning and development opportunities.



All our programmes offer fantastic opportunities to be part of a vibrant science community working with world class scientists and state of the art technology. We also strongly encourage all of our IMED Early Talent and Post Doc scientists to become part of a broader network across the AstraZeneca scientific communities which provides many opportunities to develop socially, professionally and academically. You will also have the opportunity and support to enhance your broad business knowledge across AstraZeneca by building a network with colleagues on other AstraZeneca graduate/student programmes such as Global Operations, Pharmaceutical Development and IT working together to deliver a calendar of events throughout the year including business, social and leadership information sessions.



What's next?

For more information about the programme and how to apply, please visit our website www.astrazenecacareers.com or use your smartphone to scan the QR code.

