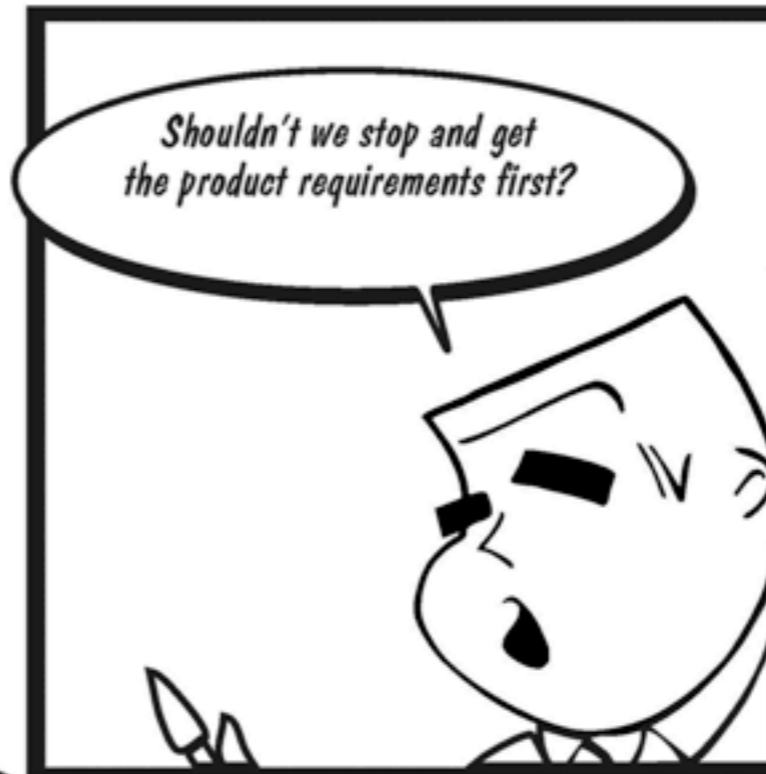


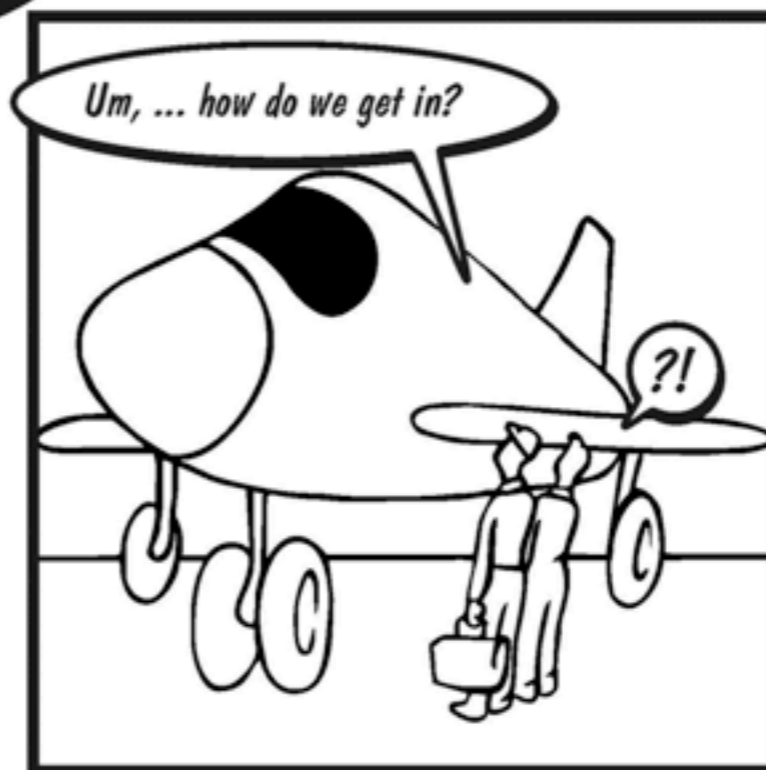
# Requirements Engineering

## DAT230

Course Overview  
Robert Feldt, 2010-08-30



Later...



# SW Project Problem Factors

Insufficient feedback from users	12,8 %
Requirements and specs incomplete	12,3 %
Requirements and expectations change	11,8 %
Insufficient support from management	7,5 %
...	...

# Requirement

“A requirement is  
an **externally observable** characteristic  
of a **desired system**”

“The system should  
have a red reset button”



# Requirements Eng. (RE)

*“RE is branch of SE concerned with real-world **goals** for, **functions** of and **constraints** on software systems...”*

*“...also concerned with relationship of these factors to precise **specifications**, to their **evolution** over time and across software **families**”*

# Course Structure

- Lectures
  - Elicitation, Specification, Agile RE, QA, Management, MDRE, ...
- Group assignment
  - Elicit, document/specify and prioritize requirements
  - Groups of 6-8 people, 2 customer interviews, 2 req formats
- Individual assignments
- Written exam

# Material

## Software & Systems Requirements Engineering In Practice



BRIAN BERENBACH DANIEL J. PAULISH  
JUERGEN KAZMEIER ARNOLD RUDORFER

## Just Enough Requirements Management

Where Software Development Meets Marketing

ALAN M. DAVIS



+ research articles



...

# Course Team



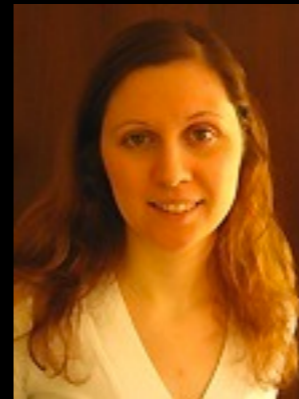
**Robert**

**Examiner,  
Lecturer**



**Ali**

**Assistant**



**Ana**

**Assistant**



**Emil**

**Assistant**



# Note!

- Course starts **tomorrow!**
  - Be there! 10:00 HC4
- Home page:
  - <http://www.cse.chalmers.se/~feldt/courses/reqeng/>
- Speedy start: 6 lectures to first weeks!

# SW Project Success Factors

Users are involved	15,9 %
Support in upper management	13,9%
Clearly defined requirements	13,0 %
Effective planning	9,6%
Realistic expectations	8,2 %
Small milestones for whole project	7,7%
...	...